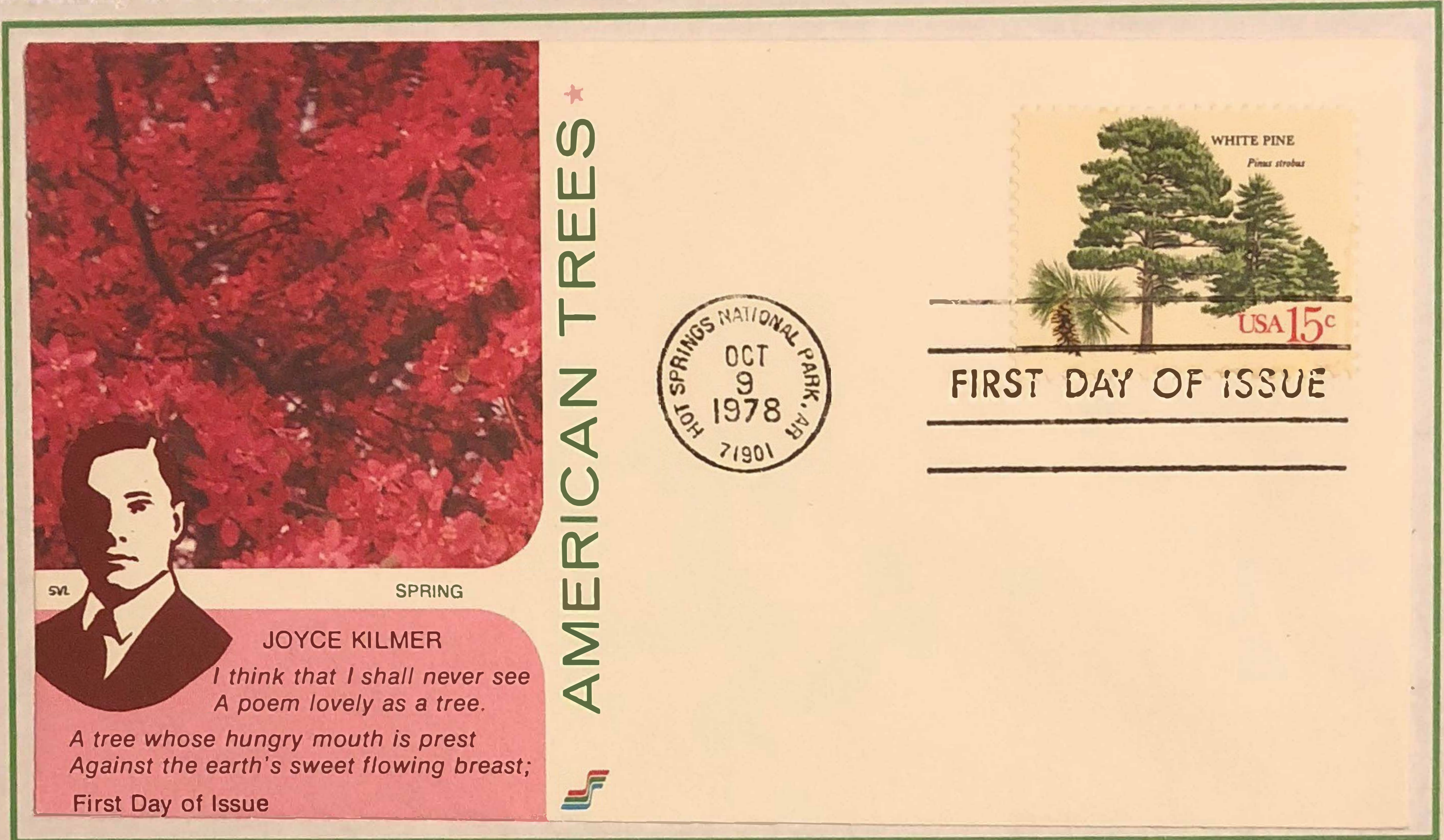




LOVELY AS A TREE



Trees provide beauty and resources. This exhibit celebrates the beauty, utility, diversity, and abundance of trees. The author first became fascinated with depictions of trees on stamps with the United States issue of American Trees in 1978. The first day cover (FDC) below celebrates the beauty of trees; the cachet includes a portion of the poem "Trees" by Joyce Kilmer



This exhibit presents stamps showing trees from around the world and a variety of plant families. For the most part, only stamps showing the entire tree (trunk, branches, leaves, and sometimes fruit, nuts, or seed pods) are included.

Part 1 – SCIENCE and ORGANIZATION

Briefly describes the geologic history of trees and the hierarchical organization of the Plant Kingdom. Of the twelve major groups (Phyla) of living plants, only five phyla include plants that grow in the form of trees. Includes an explanation of the system for providing living things with a unique scientific name. Presents a definition and description of what constitutes a tree.

Part 2 – TAXONOMIC ORDERING: DIVERSITY, ABUNDANCE, and DELIGHT

Uses scientific hierarchical ordering, also known as taxonomic ordering, to present examples of trees from five plant phyla and more than 75 different plant families. For the Phylum Anthophyta (flowering plants), presents additional information about modern classification using DNA.

Part 3 – CONCLUSION

Briefly summarizes the abundance and world-wide distribution of trees and types of forests.

NOTES:

Text boxes provide additional historical or philatelic information about stamps or stamp subjects.

A red double-outline around an item is used to identify stamps or covers of special note.